

# **SPRING / SUMMER 2009**

## **SIZING CHART**

### **MEN**

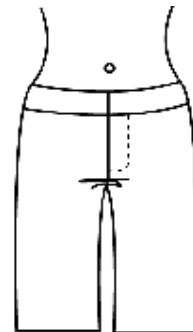
	<b>SMALL</b>	<b>MEDIUM</b>	<b>LARGE</b>	<b>XL</b>	<b>XXL</b>
<b>CHEST</b>	39-41	42-44	45-47	48-50	51-53
<b>NECK</b>	15.5-16	16.5-17	17.5-18	18.5-19	19.5-20
<b>WAIST</b>	29-31	32-34	35-37	38-40	41-43
<b>SLEEVE</b>	33-34	34-35	35-36	36-37	37-38
<b>PANT INSEAM</b>	32.5	33	33.5	34	34

### **WOMEN**

	<b>XX-SMALL</b>	<b>X-SMALL</b>	<b>SMALL</b>	<b>MEDIUM</b>	<b>LARGE</b>	<b>X-LARGE</b>	
	<b>2</b>	<b>4</b>	<b>6</b>	<b>8</b>	<b>10</b>	<b>12</b>	<b>14</b>
<b>BUST</b>	33-34	34-35	35-36	36-37	37-38	38-39	39-40
<b>SLEEVE</b>	32	32	32.5	33	33	33.5	33.5
<b>NATURAL WAIST</b>	24-25	25-26	26-27	27-28	28-29	30-31	32-33
<b>HIP</b>	35-36	36-37	37-38	38-39	39-40	40-41	42-43
<b>INSEAM</b>	31.5	31.5	32.5	32.5	32.5	33.5	33.5

- All women's bottoms have a standard KAVU rise that sits about 3 fingers below navel.

**KAVU Fit**



### **ACCESSORIES**

	<b>SMALL</b>	<b>MEDIUM</b>	<b>LARGE</b>
<b>HAT SIZE</b>	6 3/8-6 3/4	7 1/8 – 7 1/4	7 1/4 - 7 5/8
<b>HEAD SIZE</b>	20 1/2 - 21 1/2	22 -22 3/4	23 1/4 - 24 1/2